

FALL INTO A COZY WARM APARTMENT TODAY!

## Enjoy Student Living at it's Best!

No more getting up while it's still dark to drive to class!  
Avoid getting caught in bad weather this winter!  
No more speeding to class and wasting your gas!  
Sleep In!

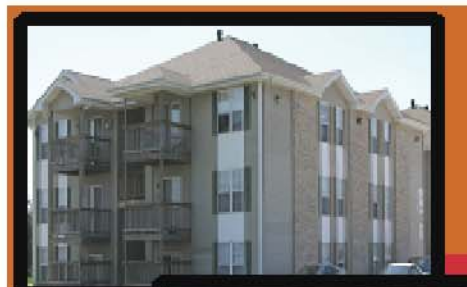
3 bedroom-fully furnished apartments still open for the 08-09 school year!

**UNIQUE HOMES PROPERTIES**  
2402 S. 18TH ST  
CHARLESTON, IL 61938  
217-345-5022  
WWW.UNIQUE-PROPERTIES.NET

The Best Value!  
The Best Location!

We'll make you feel at HOME!

WALKING DISTANCE  
TO LAKE LAND COLLEGE!  
SAVE TIME!  
SAVE GAS!  
SAVE MONEY!



## LET GREENVILLE COLLEGE HELP you TAKE THE NEXT STEP TOWARD YOUR NEXT DEGREE

TRANSFER FRIENDLY POLICIES ■ FAST TRANSCRIPT EVALUATION ■ CHRIST-CENTERED EDUCATION

### TRADITIONAL ACADEMIC PROGRAMS

- ▶ Over 50 programs of study like:
  - Contemporary Christian Music
  - Music Business
  - Communication (PR, Mass Communication, Speech, Theatre)
  - Media Promotions
  - Biology (over 90% admittance to Medical School)
  - Teacher Education (rated a "Model" program by IL State Board of Education)
  - Digital Media (Art, Audio Recording, IS, Internet, Video and Film)

Transfer Admissions Counselor:  
CALL 800.345.4440  
admissions@greenville.edu

### ADULT DEGREE-COMPLETION PROGRAM

- ▶ You'll attend class just once a week for 18 months
- ▶ Classes meet on the Lake Land campus
- ▶ Designed for Adults with at least 3 years of work experience

Adult Degree-Completion Counselor:  
CALL 888.818.4625  
its-time@greenville.edu

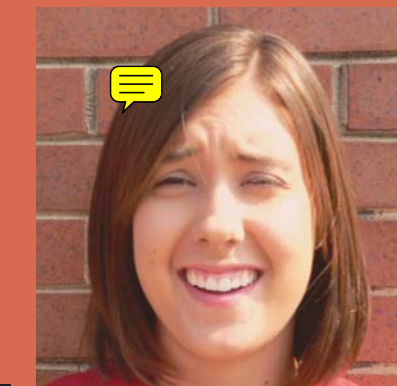
GREENVILLE COLLEGE HAS A PROGRAM OF STUDY TO FIT your NEEDS!

WWW.GREENVILLE.EDU

Lake Land College - Mattoon, IL

# Navigator

Vol. 8, Issue 2 - October 2008



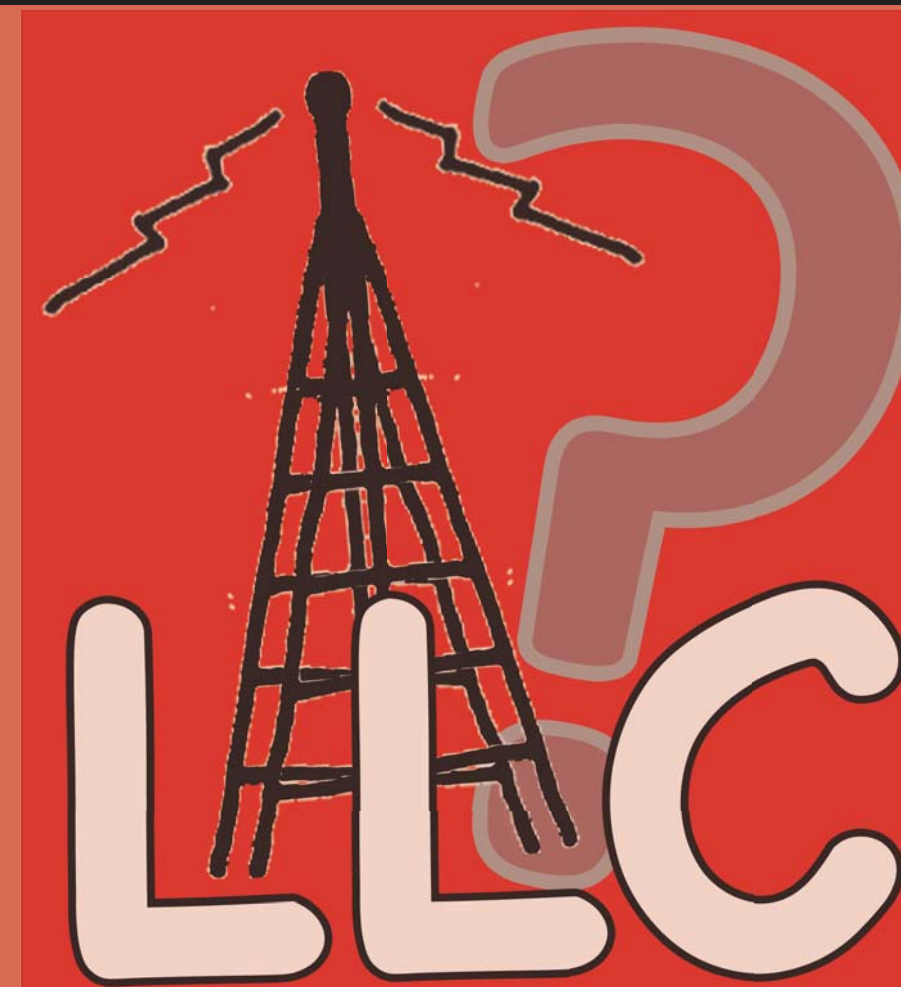
Brittney Hosselton

Learn about the V.P. candidates.

See page 4

"It's Kind of a Funny Story."

See page 12



Will Lake Land get better cell phone service?

See page 3

Find out the story behind the Haunted Ashmore Estates.

See page 10

This is Brittney Hosselton, SGA member and Student Representative. Meet the rest of the SGA members inside.

See page 8-9

See who this year's Lake Land College Cheerleaders are.

See page 15