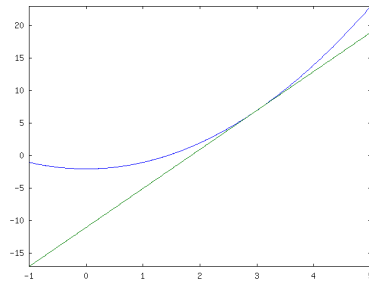


## Annotation using Ipe — Linux and Windows

1. Produce a .PNG file from some other program. For example, the following file, `newton.png`, from Octave



2. Start Ipe
3. Import the .PNG file into Ipe using File/Insert Image/Insert bitmap image
4. Use Ipe to annotate the drawing
5. Save the annotated version with another name, say `annotated-newton.png` This will be a .PDF file.
6. Import the .PDF file in your  $\text{\LaTeX}$  file:

```
\includegraphics[width=2.5in]{annotated-newton} % Adjust width as desired
```

